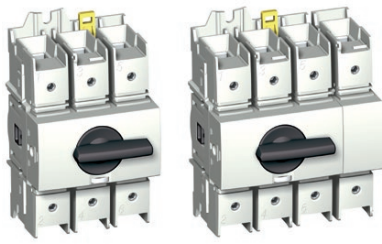


(FR) Load Break Switch
(ZH) 负荷开关

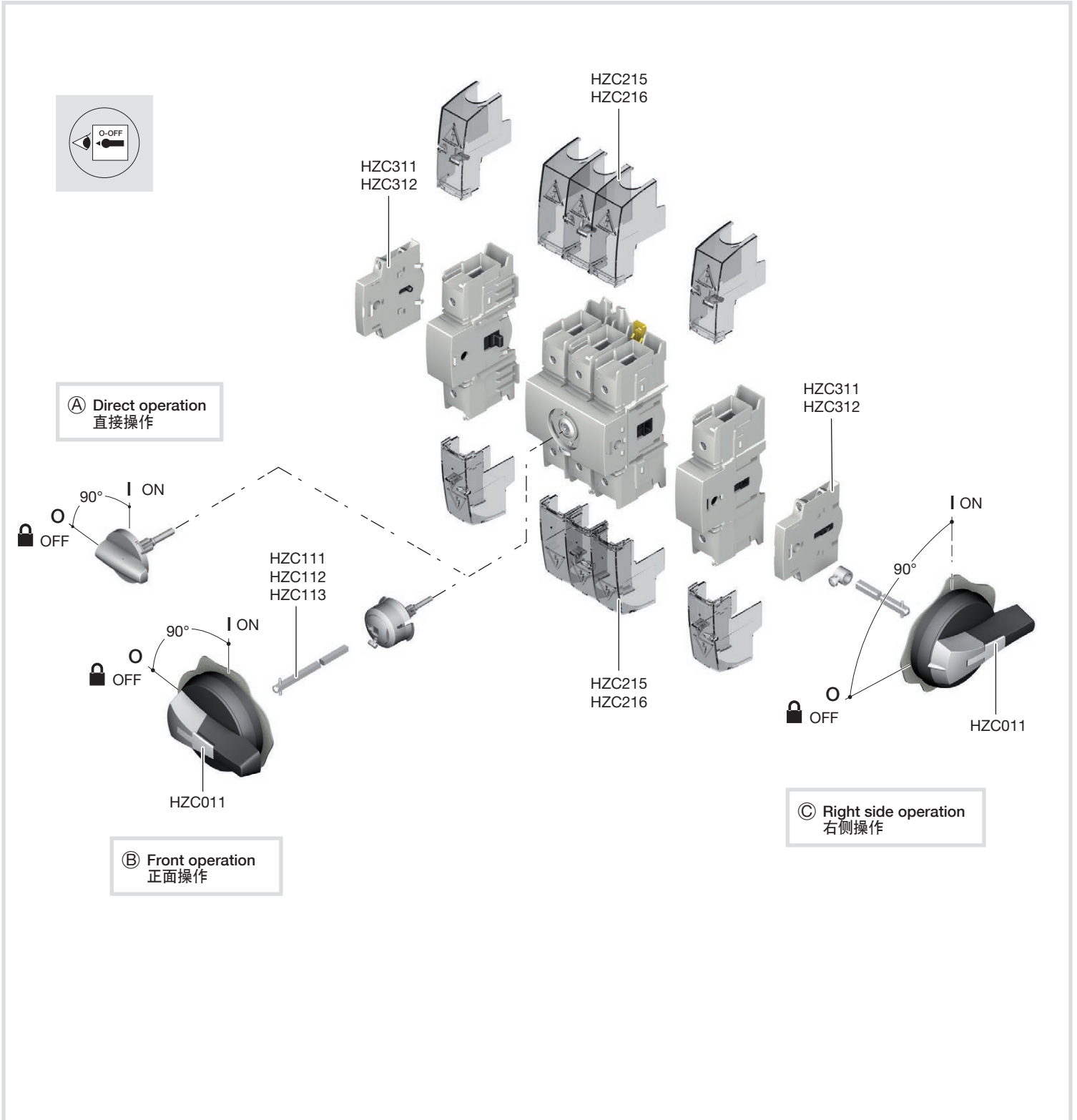
User instructions
说明书



6LE000059B

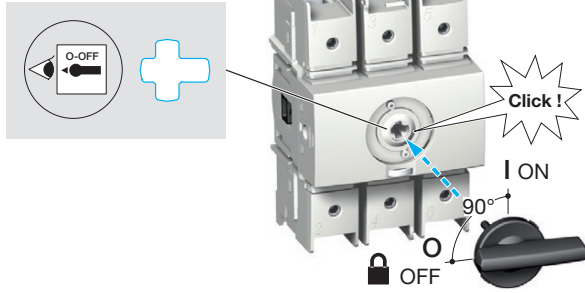
Ref. Switch 型号	Rating 额定电流	AC	Ref. Terminal shrouds 端子盖板型号
HAD310P	3 x 100 A	AC-23A	HZC215
HAD312P	3 x 125 A	AC-22A	HZC215

100A - 125A

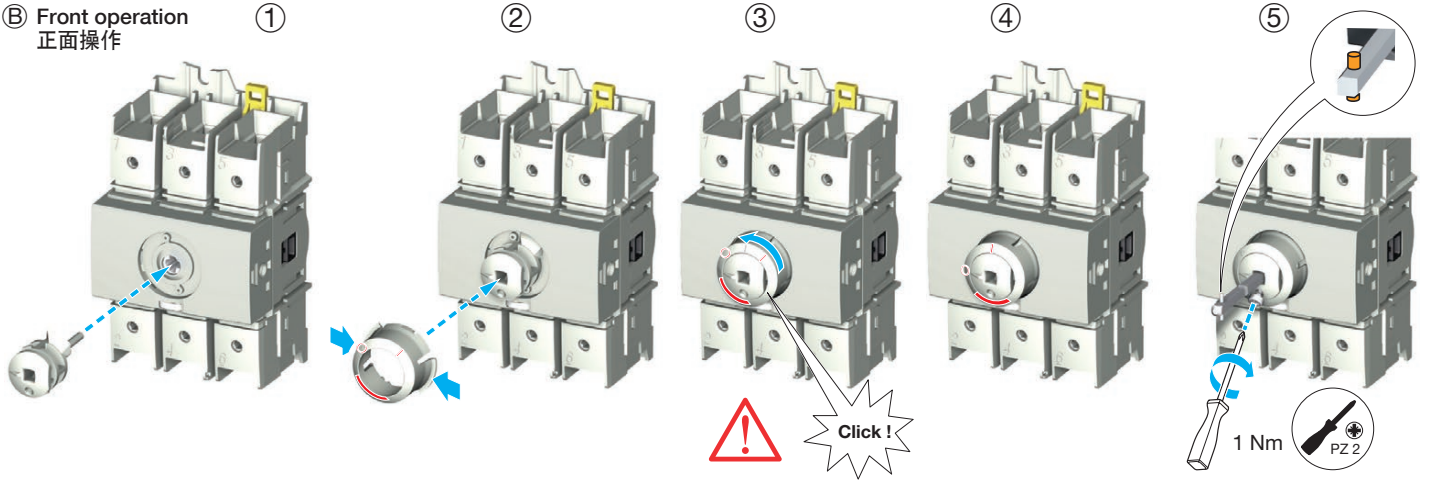


Edition 04/14 - IS 543011-B / RECTO-VERSO / S blanc offset quadri 80g/m²

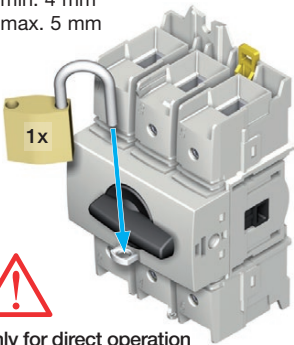
Ⓐ Direct operation
正面操作



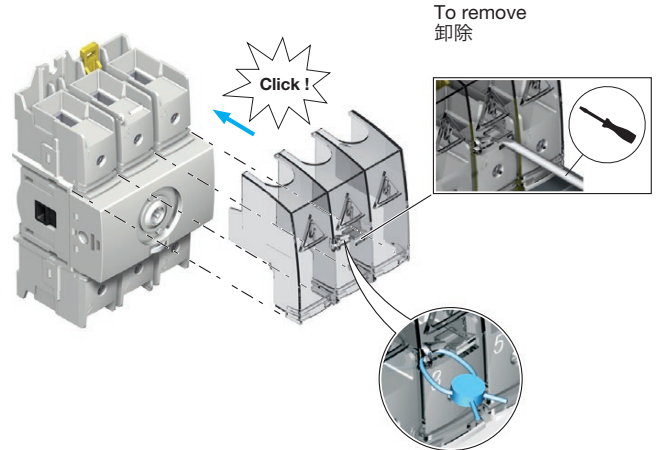
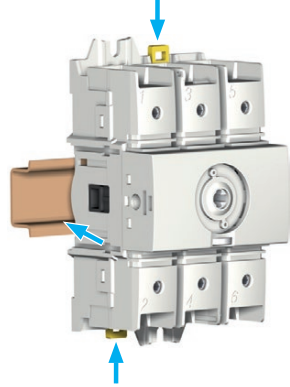
Ⓑ Front operation
正面操作



Ø min. 4 mm
Ø max. 5 mm

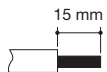


⚠
Only for direct operation
只用于直接操作



To remove
卸除

🔒 max. Ø 2 mm



10 to 35 mm²

50 to 70 mm²



4,0 Nm

5,0 Nm

